



Speed Tracker Plus

Collect, monitor, and analyze bidirectional traffic data from multiple lanes with the fully integrated, wireless Traffic Logix Speed Tracker Plus.

The Traffic Logix Speed Tracker Plus is a covert, wireless traffic collection device that provides law enforcement and traffic engineers with detailed statistics and reports on driver behavior. The bidirectional tracker gives you detailed mid-street data on vehicle classification, speeding violations, and other traffic statistics from two lanes simultaneously, or four, when installed on the median. Data is instantly available on Logix on Cloud.

The lightweight, discreet data collector gives you a window into driver behavior, helping you make data informed decisions about how to address speed complaints. Verify or refute speed concerns with accurate volume, speed, and classification data without even stepping foot on the road. Logix on Cloud gives you remote access to your data with robust reporting and visual charts and graphs that can be exported, saved, or printed. Data can be reviewed right from your desk.



Features

Discreet Design: Measure natural traffic patterns discreetly and unobtrusively.

Bidirectional data collection: Gather speed, volume, and classification data from up to four lanes in two directions.

Autonomous Operation: Ultra low power consumption offers up to 2 weeks of data collection with internal lithium-ion battery.

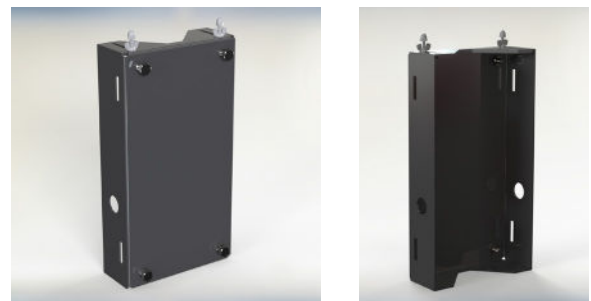
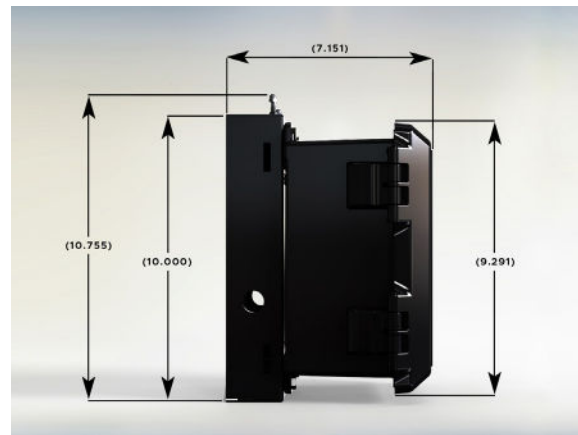
Optional Solar Power: Works with our solar panel kit to harness natural energy for continuous operation.

Long Lasting: Weatherproof case and vandal resistant enclosure offers enduring functionality.

Robust Traffic Analysis: Create detailed reports, charts and graphs to harness your data to make intuitive and efficient decisions.

Remote Data Access: Data sent wirelessly to Logix on Cloud, which can be accessed right from your desk.

Amazing Portability: The universal mounting bracket makes transporting and reinstalling your tracker quick and simple.



Mounting bracket

Feature	Specifications
Dimensions	
Unit alone	9.291 in / 23.6 cm (h) x 7.76 in / 19.7 cm (w) x 5.51 in / 14.02 cm (d)
Weight	Battery Powered Model: 10 lbs (unit and battery) Solar Powered Model (optional): 10 lbs (unit and battery)
Technical Specifications	
Operating Temperatures F (C):	-40° (-40°) to 185° (85°)
Bidirectional Detection	Speed Detection Count Classification: 1. Small 2. Medium 3. Large Miles Per Hour (mph): 3-99 mph Kilometers Per Hour (km/h): 5-160 km/h
Communications	GSM (for use with SafePace® Cloud) Bluetooth (for use with Android mobile app)
Programming	SafePace® Cloud remote management (standard) 24/7 365 day programming and scheduling
Power Options (Electrical Specifications)	
Power Input	100~240 V AC @ 150 mA 12 V DC (11-14.5 V @ 1A) Wireless battery charge monitoring (via software interface)
Power Options	DC (battery) power input: 12 V DC (11-14.5 V @ 1A) DC (battery) power option: 12.8V, 15Ah Lithium-ion battery - 2 batteries
Solar Power (Optional)	20W solar panel
Radar	
Internal Radar	Doppler (FCC approved)
Model	IVS-947
Radar RF out	5 mW maximum
Radar f-center	24.250 GHz
Pickup distance	Up to 164 feet / 50 meters
Beam angle	24° (vertical) x 12° (horizontal)
Beam polarization	Linear
CE Mark (Radar)	Yes

Feature	Specifications
Enclosure (Non-sealed and ventilated)	
Frame	Vandal resistant, lightweight black polymer
Weatherproof	NEMA 4X-12, IP65 level compliant
Data collection, statistical analysis and reporting	
Data Collection	Traffic data collected and stored by location Download through wireless connection
Statistical Reporting & Charts	Summary Reports Weekly Reports Period Comparison Reports Full custom reports and charts Reporting Parameters: -Average Vehicle Count -Total Vehicle Count -Average Speed -Average Number of Speed Violations -Total Number of Speed Violations
Other Features	-Minimum and Maximum Speed -85th Percentile Speed -Counters by Speed Bins -5 units (MPH or KM/H) Speed Bin Resolution -Reports print directly or can be exported into CSV format, MS Excel, Adobe Acrobat PDF and HTML -Charts may be printed directly or converted into Adobe Acrobat PDF and image formats
Warranty	
Hardware	2 Years
Batteries	1 Year

Data collection types

<input type="checkbox"/> % of Speed Violations	<input type="checkbox"/> Minimum Speed
<input type="checkbox"/> % of Vehicles Respecting Limit	<input type="checkbox"/> Maximum Speed
<input type="checkbox"/> % of Vehicles in Tolerated Range	<input type="checkbox"/> Tolerated Speed
<input type="checkbox"/> # of Vehicles Respecting Limit	<input type="checkbox"/> Posted Speed Limit
<input type="checkbox"/> # of Vehicles Inside Tolerated Range	<input type="checkbox"/> Average Speed
<input type="checkbox"/> # of Speed Violations	<input type="checkbox"/> Total Vehicles Count
<input type="checkbox"/> 50th Percentile Speed	<input type="checkbox"/> 85th Percentile Speed

Select All