



# Private Community Cameras

**The Guardian Pro camera is the smartest way to protect HOA roads and stop speeders in their tracks.**

Designed in conjunction with HOA boards and community residents, the Guardian Pro is the only camera created solely to meet the needs of private communities. The camera can capture images of vehicles in multiple lanes and uses precise OCR recognition for license plate recognition. You can choose to mail warnings to residents or include ticketing to penalize speed violators. Guardian Pro can help you enforce speed limits and protect your roads.



## Features

Captures images of speed violators during both **day and night** hours

Detects vehicle speeds in multiple lanes; ideal solution for **HOAs**

Interactive web-based platform allows you to set local speed limit, **violation speed limit**, and how many images to capture per violator

Technology fully operational in **all weather conditions** including fog, rain, snow, or intense heat or cold

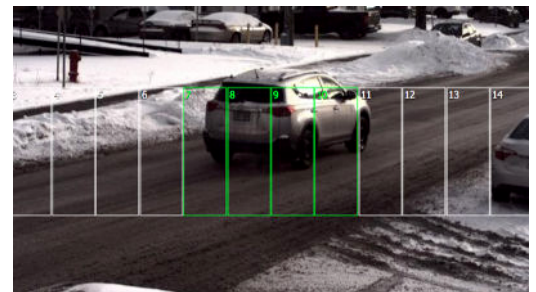
Powered by AC power supply with **option** to use solar power

**Customized warnings or tickets** can be mailed to residents to discourage further violations

**Zero software footprint** with no required software installation

**Data is accessible from anywhere** with an internet connection

**Two year** warranty on camera, one year warranty on batteries



Sample Image Capture



Illuminator Front View

Feature	Specifications
Camera/Imaging	
Resolution (H × V)	Full HD, 1920 × 1080 pixels
Camera Lens	CS mount; motorized telephoto lens; 4X motorized zoom; suitable for day/night time operation
Number of traffic lanes	2
OCR	Server-based; Rear plates
Dimension of camera	8.25" (H) × 6.25" (W) × 2.75" (D)
Mechanical Specifications	
Operating temperature	-40° C to 85° C
IP rating	IP65
Camera	Weight: 3.65 lbs Camera Housing: Aluminum, light gray or black
AC Power Box Option	Weight of AC Power Box: 5.9 lbs Dimension of AC Power Box: 11.5" (H) × 8.1" (W) × 5.2" (D) Bracket Weight: 1.4 lbs
Battery Box Option	Weight of Battery Box: 20 lbs (excluding batteries) Dimension of Battery Box: 20.5" (H) × 16.2" (W) × 11.6" (D) Bracket Weight: 2.5 lbs Weight of Battery: 17.6 lbs Dimension of Battery: 9.01" (H) × 5.43" (W) × 8.38" (D)
Solar Panel Options (100 W / 190 W)	Weight of 100 W Solar Panel: 19.6 lbs Dimension of 100 W Solar Panel: 40" (H) × 26.3" (W) × 1.4" (D) Bracket Weight: 5 lbs Weight of 190 W Solar Panel: 28.7 lbs Dimension of 190 W Solar Panel: 58.3" (H) × 26.3" (W) × 1.4" (D) Bracket Weight: 9.5 lbs
Processor/Storage/OS	
CPU	Raspberry Pi compute module ARM Cortex-A72 1.5 GHZ Quad core processor
Memory	4 GB of RAM
Storage	16 GB of flash (non-volatile) storage
Ticket Buffer	approximately 1200 tickets / warnings
Operating System	Custom-built Linux

Feature	Specifications
LEDDAR Sensor	
Range of speed sensor	Up to 30 meters
Number of traffic lanes	Up to 2
LED wavelength	940 nm
Sensor Beam Angle	19° horizontal × 3° vertical
Speed measurement range	0 to 170 km/h (110 mph)
Mounting height	2 meters to 3.8 meters
Illuminator	
Internal/External	External
Wavelength	850nm
Input voltage	12 V AC
Electrical Specifications	
Power supply output	12 V DC
Current consumption	0.51 Amps
Power consumption	6.01 Watts
Communication	
Wi-Fi	Wi-Fi 802.11 b/g/n
GSM	3G/4G (2G compatible)
SIM card size	Standard
Ethernet	Standard wired Ethernet 100 BASE-TX
Warranty	
Camera	2 years
Batteries	1 year