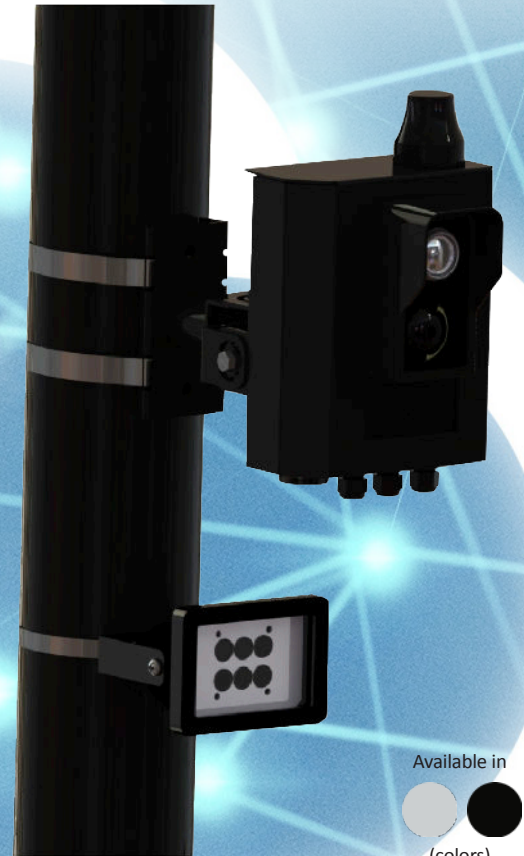




Municipal Enforcement Cameras

The Enforcer Plus camera is an enforcement ticketing camera system for use in cities where speed camera infractions are legally permissible.

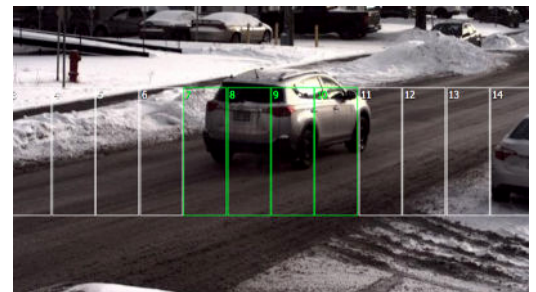
The Enforcer Plus camera offers end-to-end ticketing that's fully enforceable by local police. It captures images of speeding drivers in multiple lanes simultaneously and can be used in cities of all sizes. Precise OCR license plate recognition captures images of speed violators which can be included in mailed tickets along with fines for speeding infractions. It is an effective enforcement solution to penalize speed violators, prevent further speeding, and protect your streets.



Available in
 
 (colors)

Features

Captures images of speed violators during both day and night hours
Detects vehicle speeds in multiple lanes; ideal solution for municipalities
Interactive web-based platform allows you to set local speed limit, violation speed limit , and how many images to capture per violator
Technology fully operational in all weather conditions including fog, rain, snow, or intense heat or cold
Powered by AC power supply with option to use solar power
Customized tickets mailed to speed violators to discourage further violations
Zero software footprint with no required software installation
Data is accessible from anywhere with an internet connection
Two year warranty on camera, one year warranty on batteries
Camera can differentiate which lane vehicle was traveling in
Night color images optional with Xenon flash



Sample Image Capture



Illuminator Front View

Feature	Specifications
Camera/Imaging	
Resolution (H × V)	Full HD, 1920 × 1080 pixels
Camera Lens	CS mount; motorized telephoto lens; 4X motorized zoom; suitable for day/night time operation
Number of traffic lanes	2
OCR	Server-based; Rear plates
Dimension of camera	8.25" (H) × 6.25" (W) × 2.75" (D)
Mechanical Specifications	
Operating temperature	-40° C to 85° C
IP rating	IP65
Camera	Weight: 3.65 lbs Camera Housing: Aluminum, light gray or black
AC Power Box Option	Weight of AC Power Box: 5.9 lbs Dimension of AC Power Box: 11.5" (H) × 8.1" (W) × 5.2" (D) Bracket Weight: 1.4 lbs
Battery Box Option	Weight of Battery Box: 20 lbs (excluding batteries) Dimension of Battery Box: 20.5" (H) × 16.2" (W) × 11.6" (D) Bracket Weight: 2.5 lbs Weight of Battery: 17.6 lbs Dimension of Battery: 9.01" (H) × 5.43" (W) × 8.38" (D)
Solar Panel Options (100 W / 190 W)	Weight of 100 W Solar Panel: 19.6 lbs Dimension of 100 W Solar Panel: 40" (H) × 26.3" (W) × 1.4" (D) Bracket Weight: 5 lbs Weight of 190 W Solar Panel: 28.7 lbs Dimension of 190 W Solar Panel: 58.3" (H) × 26.3" (W) × 1.4" (D) Bracket Weight: 9.5 lbs
Processor/Storage/OS	
CPU	Raspberry Pi compute module ARM Cortex-A72 1.5 GHZ Quad core processor
Memory	4 GB of RAM
Storage	16 GB of flash (non-volatile) storage
Ticket Buffer	approximately 1200 tickets
Operating System	Custom-built Linux

Feature	Specifications
LEDDAR Sensor	
Range of speed sensor	Up to 30 meters
Number of traffic lanes	Up to 2
LED wavelength	940 nm
Sensor Beam Angle	19° horizontal × 3° vertical
Speed measurement range	0 to 170 km/h (110 mph)
Mounting height	2 meters to 3.8 meters
Illuminator	
Internal/External	External
Wavelength	850nm
Input voltage	12 V AC
Electrical Specifications	
Power supply output	12 V DC
Current consumption	0.51 Amps
Power consumption	6.01 Watts
Communication	
Wi-Fi	Wi-Fi 802.11 b/g/n
GSM	3G/4G (2G compatible)
SIM card size	Standard
Ethernet	Standard wired Ethernet 100 BASE-TX
Warranty	
Camera	2 years
Batteries	1 year